

AUDIO VISUAL ILLUMINATIONS INC.

SHEET INDEX

SHEET NO.	ISSUE LOG						ROOM	DRAWING DESCRIPTION
	ISSUED FOR REVIEW 11/21/2025	ISSUED FOR CONSTRUCTION 11/24/2025						
AV-101							--	COVER PAGE
AV-102							--	GENERAL NOTES, RESPONSIBILITY & JUNCTION BOX SCHEDULE, SYMBOLS AND LEGENDS
AV-301.1							FOUR WINDS DISCO	AUDIO & NETWORK FUNCTIONAL DRAWING
AV-301.2							FOUR WINDS DISCO	POWER DISTRIBUTION FUNCTIONAL DRAWING



AUDIO VISUAL ILLUMINATIONS INC.

GENERAL INFORMATION			
DRAFTER:	AVDL		
DESIGNER:	1		
PROJECT MGR:	1		
SALES REP:	1		
DATE:	11.21.2025		
SCALE:	AS INDICATED		

DATE:	NO:	REVISIONS:
11.21.25	0	ISSUED FOR REVIEW
11.24.25	1	ISSUED FOR CONSTRUCTION

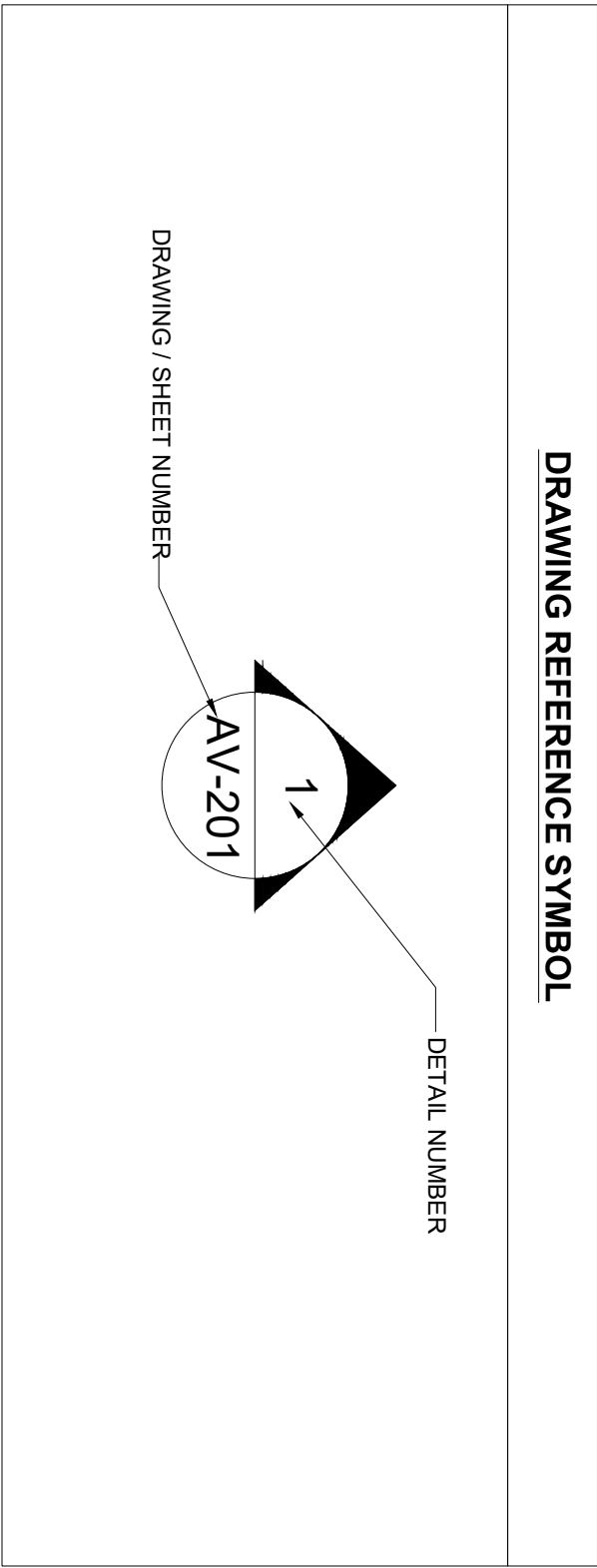
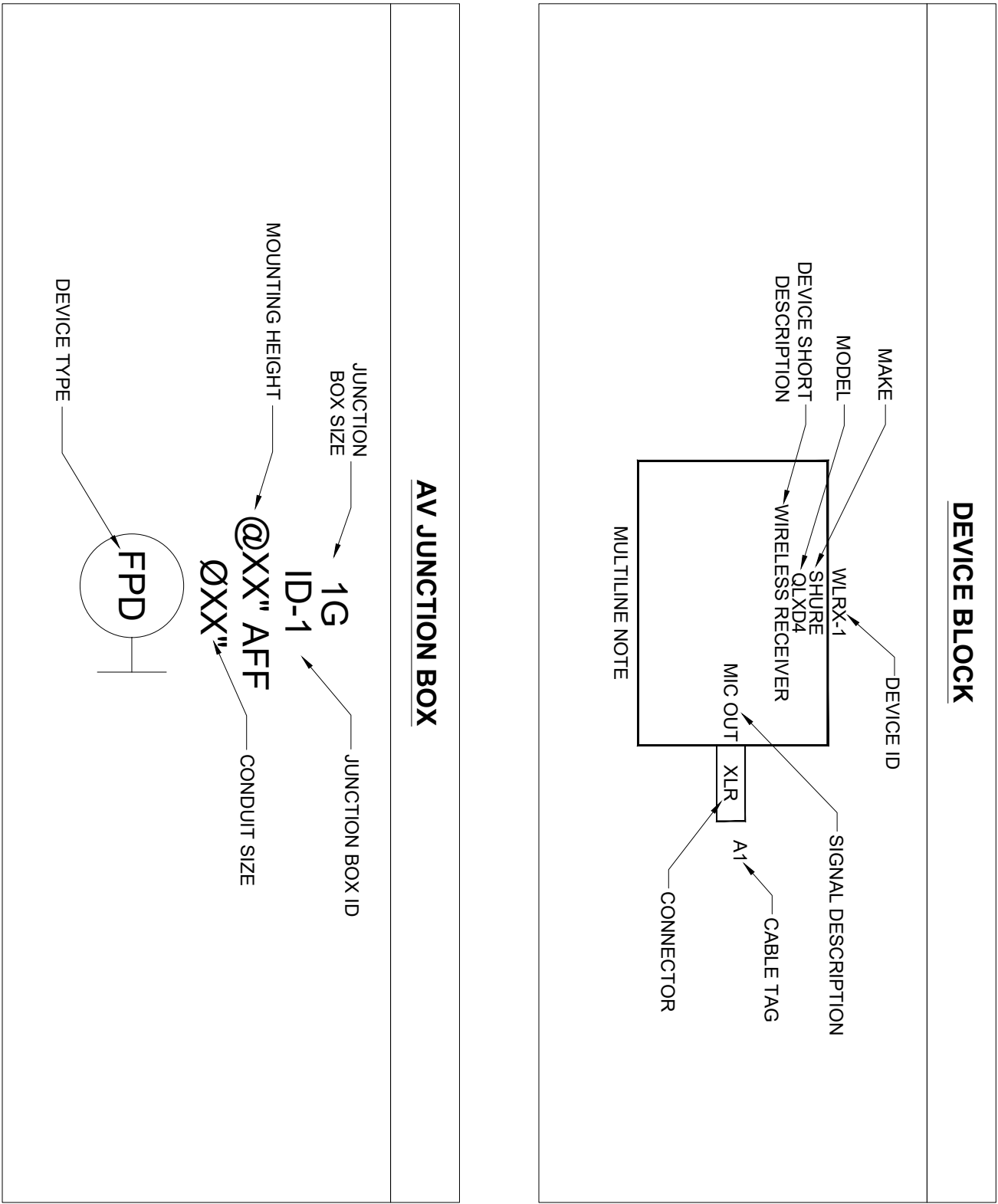
AV SYMBOL LEGEND AND JBOX SCHEDULE (FLOOR)	
	AV EQUIPMENT RACK @ 18" A.F.F. UNLESS OTHERWISE NOTED SIZE = 1G (1 GANG), 2G (2 GANG BOX), 3G (3 GANG BOX) ETC.
	AV INTERFACE @ 18" A.F.F. UNLESS OTHERWISE NOTED SIZE = 1G (1 GANG), 2G (2 GANG BOX), 3G (3 GANG BOX) ETC.
	AV TOUCH PANEL @ 54" A.F.F. UNLESS OTHERWISE NOTED SIZE = 1G (1 GANG), 2G (2 GANG BOX), 3G (3 GANG BOX) ETC.
	AV BUTTON PANEL @ 48" A.F.F. UNLESS OTHERWISE NOTED SIZE = 1G (1 GANG), 2G (2 GANG BOX), 3G (3 GANG BOX) ETC.
	FLAT PANEL DISPLAY @ 60" A.F.F. UNLESS OTHERWISE NOTED SIZE = 1G (1 GANG), 2G (2 GANG BOX), 3G (3 GANG BOX) ETC.
	FLAT PANEL DISPLAY @ 60" A.F.F. UNLESS OTHERWISE NOTED SIZE = 1G (1 GANG), 2G (2 GANG BOX), 3G (3 GANG BOX) ETC.
	CAMERA @ 84" A.F.F. UNLESS OTHERWISE NOTED SIZE = 1G (1 GANG), 2G (2 GANG BOX), 3G (3 GANG BOX) ETC.
	WALL MOUNT SPEAKER @ 84" A.F.F. UNLESS OTHERWISE NOTED SIZE = 1G (1 GANG), 2G (2 GANG BOX), 3G (3 GANG BOX) ETC.
	AV SCREEN SWITCH @ 48" A.F.F. UNLESS OTHERWISE NOTED SIZE = 1G (1 GANG), 2G (2 GANG BOX), 3G (3 GANG BOX) ETC.
	WALL MOUNTED WIRELESS ACCESS POINT SIZE = 1G (1 GANG), 2G (2 GANG BOX), 3G (3 GANG BOX) ETC.
	WALL MOUNTED SENSORS SIZE = 1G (1 GANG), 2G (2 GANG BOX), 3G (3 GANG BOX) ETC.
	WALL MOUNTED CLOCK POWER OUTLET
	WALL MOUNTED DUPLEX POWER OUTLET
	WALL MOUNTED QUAD POWER OUTLET
	WALL MOUNTED DATA OUTLET
	WALL MOUNTED VOICE/DATA OUTLET
	FLOOR BOX
	FLOOR CORE
	TABLE BOX
	FLOOR DUPLEX POWER OUTLET
	FLOOR DUPLEX POWER OUTLET
	FLOOR QUAD POWER OUTLET
	FLOOR DATA OUTLET
	FLOOR VOICE/DATA OUTLET
SYMBOL LEGEND AND JBOX SCHEDULE (CEILING)	
	CEILING MOUNTED SPEAKER
	CEILING MOUNTED DISPLAY
	CEILING MOUNTED PROJECTOR
	CEILING MOUNTED CAMERA
	CEILING MOUNTED MICROPHONE
	CEILING MOUNTED WIRELESS ACCESS POINT
	110V POWER @ SCREEN LOW VOLTAGE CONTROLLER
	CEILING MOUNTED SENSOR
	CEILING MOUNTED CLOCK POWER OUTLET
	CEILING MOUNTED DUPLEX POWER OUTLET
	CEILING MOUNTED QUAD POWER OUTLET
	CEILING MOUNTED DATA OUTLET
	CEILING MOUNTED VOICE/DATA OUTLET

GENERAL ELECTRICAL NOTES	
1	BOX MOUNTING HEIGHTS ARE TO CENTER OF BOX.
2	BOX MOUNTING DEPTHS ARE TO FACE OF BOX. P = PROTRUDING R = FLUSH S = SURFACE.
3	ALL BOXES AND CONDUIT IN WALLS AND CEILINGS SHALL BE FLUSH MOUNTED OR CONCEALED UNLESS OTHERWISE NOTED.
4	VERIFY ALL STANDARD HEIGHTS WITH PREVAILING CONDITIONS AT JOBSITE.
5	THESE DRAWINGS ARE FOR REQUIREMENTS REFERENCE ONLY, NOT FOR CONSTRUCTION.
6	COORDINATE WITH ARCHITECT FOR ALL DEVICE LOCATIONS.
7	ELECTRICAL WIRING IS TO BE PROVIDED BY THE PROJECT DIVISION. 18 CONTRACTOR UNLESS NOTED OTHERWISE.
8	ALL CONDUIT SHALL BE STEEL (E.M.T. OR RIGID), ALUMINUM, FIBERGLASS, OR PVC. NOT ACCEPTABLE.
9	FLEX CONDUIT SHALL NOT BE CONSIDERED ACCEPTABLE.
10	E.C. SHALL INSTALL INTERMEDIATE PULL BOXES IN CONDUITS FOR EVERY 180' TOTAL OF BENDS.
11	E.C. SHALL INSTALL INTERMEDIATE PULL BOXES IN CONDUITS FOR EVERY 100' RUNNING FEET OF CONDUIT.
12	INTERMEDIATE PULL BOXES SHALL BE 12"x12"x4" MINIMUM IF ANY CONDUIT ENTRY IS 1-1/4" OR LARGER.
13	INTERMEDIATE PULL BOXES SHALL BE 4"x11"x6" SQUARE X 3 1/2" DEEP IF ALL CONDUIT ENTRIES ARE 1" OR LESS.
14	ALL 120 VOLT WIRE, DEVICES, AND CONNECTIONS BY E.C.
15	ALL LOW VOLTAGE AV SYSTEM DEVICES, AND CONNECTIONS BY AV SYSTEM (SUB)CONTRACTOR.
16	ALL GANG BOXES SHALL BE 3 1/2" DEEP, MINIMUM. SINGLE PIECE CONSTRUCTION. MODULAR BOXES ARE NOT ACCEPTABLE.
17	FLUSH OR RECESSED MOUNTED 1 & 2 GANG BOXES SHALL BE 4-1/16" SQUARE X 3 1/2" DEEP BOX WITH APPROPRIATE PLASTER RING EXTENSION U.O.N.
18	PROVIDE ALL CONDUIT, J-BOXES, NEMA OR CUSTOM ENCLOSURES, FLOOR BOXES, LOUDSPEAKER ENCLOSURES, POWER CIRCUITS, POWER WIRE AND POWER CONNECTIONS UNDER THIS SECTION.
19	ALL BOXES AND CONDUIT IN WALLS AND CEILINGS SHALL BE FLUSH MOUNTED OR CONCEALED UNLESS OTHERWISE NOTED.
20	SUPPORT ALL LOUDSPEAKER ENCLOSURES FROM STRUCTURE RATHER THAN FROM CEILING.
21	ALL WIRING SHALL BE IN CONDUIT UNLESS OTHERWISE NOTED. ALL DEVICES CONNECTED WITH MINIMUM 5/16" C.
22	REFER TO ARCHITECTURAL ELEVATIONS AND CEILING PLANS FOR EXACT PLACEMENT OF FINISHES WITH DESIGN ARCHITECT.
23	FLOOR PLANS ARE FINAL. AUTHORITY OF DEVICE QUANTITIES WHICH ARE SUBJECT TO REVISION PROVIDING PROPER NOTICE.
24	WHERE NO BACKBOX IS REQUIRED PLEASE REFERENCE THE MANUFACTURER'S INSTALLATION DETAIL FOR ROUGH-IN AND CONDUIT TERMINATION.
25	WHERE EXACT DIMENSIONS ARE NOT CALLED OUT, THE LOCATION OF EQUIPMENT, JUNCTION BOXES, OUTLETS, WIRE WAYS, PANELS, ETC., ARE TO BE IDENTIFIED ON COORDINATION DRAWINGS FOR REVIEW ACCORDING TO PROJECT GENERAL CONDITIONS.
26	PROVIDE TEMPORARY LABELING DESCRIBING BOXES.
27	CONCEAL CONDUIT CONNECTIONS TO JUNCTION BOXES MOUNTED IN PUBLIC AREAS WHERE BOXES ARE SURFACE MOUNTED. CONDUIT SHALL ENTER FROM THE REAR OF THE BOX.
28	REFER TO FLOOR PLANS AND CONDUIT RISER DIAGRAMS FOR CONDUIT SIZING AND INTERCONNECTION OF VARIOUS DEVICES.
29	CONSTANT VOLTAGE LOUDSPEAKER CABLE SHALL BE ROUTED IN CONDUIT WHEN EXPOSED.
30	CONDUIT RUN IN SLABS SHALL HAVE A PULL BOX LOCATED FOR EACH 180 DEGREE BEND.
31	FOR EVERY 100 FEET OF STRAIGHT EMPTY CONDUIT, THERE SHALL BE A MINIMUM OF ONE PULL BOX, AND AN ACCESSIBLE PULL BOX FOR MORE THAN TWO 90 DEGREE BENDS IN A CONDUIT RUN.
32	THE DRAWINGS INDICATE ONE ROUTING METHOD FOR THE CONDUITS. MINOR CHANGES MAY BE MADE TO CONDUIT SYSTEM TO ACCOMMODATE SITE CONDITIONS OR SIMPLY INSTALLATION AS LONG AS INSTALLER AND ARCHITECT APPROVE THE COORDINATION DRAWINGS SUBMITTED FOR REVIEW.
33	E.C. TO PROVIDE CABLE PROTECTION BUSHINGS ON ALL BOXES AND CONDUIT STUB-OUTS.
34	POWER JUNCTION BOX SURFACE MOUNT AT 84" A.F.F. PROVIDE 20A CIRCUITS WITH DEGRADED NEUTRALS AND OVERSEEDS GROUND BACK TO PANEL. 20V LEAVE CIRCUIT TAIL AT 20' LENGTH FOR TERMINATION TO "AV", "TV", "ER" TYPE RACKS.
35	Mount devices as indicated on drawings. COORDINATE EXACT LOCATIONS AND MOUNTING WITH ARCHITECT.
36	PROTECTION SCREEN BACKBOX PROVIDED BY AV AND INSTALLED BY DIVISION 16. PROVIDE GANG PANEL SCREENS TO BE CONTROLLED BY AV.
37	LV CONTRACTOR TO PULL, TERMINATE, AND TEST ALL RISER AND DISTRIBUTION CABLING INCLUDING FIBER, AND NETWORK CATEGORY CABLES.

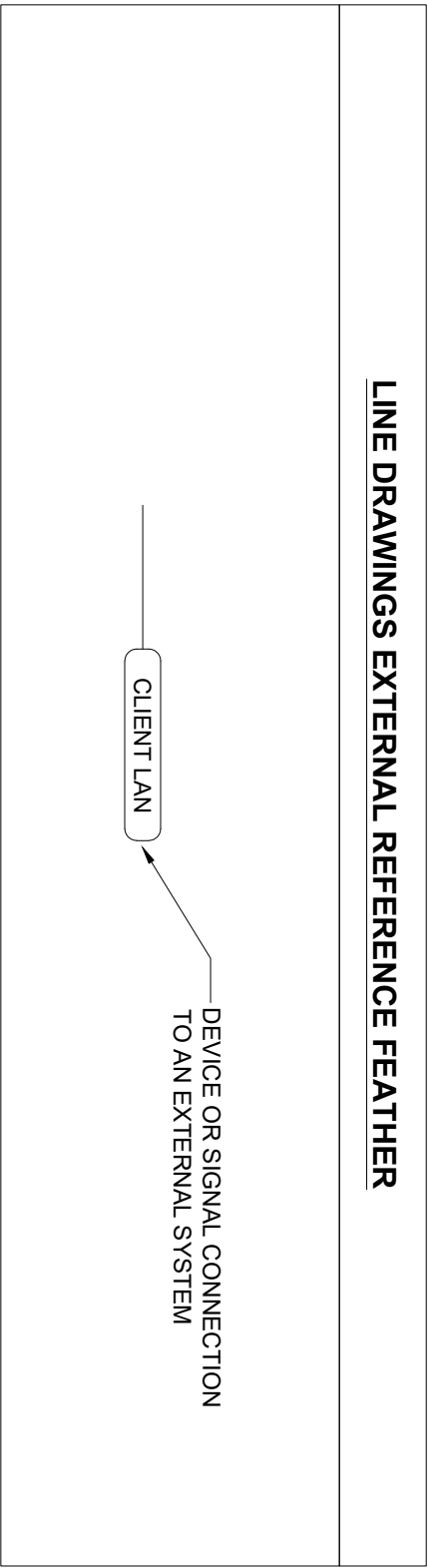
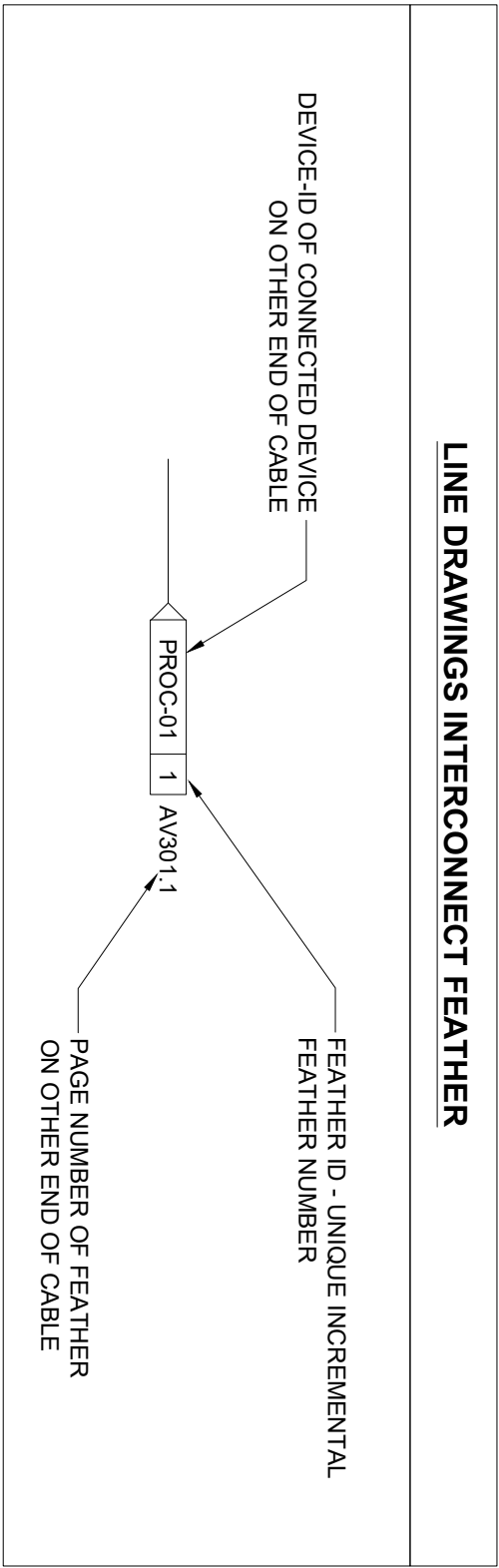
RESPONSIBILITY SCHEDULE												
		SUPPLIED BY:			INSTALLED BY:							
		E.C.			T/D.C.							
		CLIENT			AV C.							
		G.C.			E.C.							
		T/D.C.			CLIENT							
		AV C.			AV C.							
		N/A			N/A							
CEILING MOUNTED EQUIPMENT												
		EQUIPMENT HARD POINTS:										
		PROJECTION SCREENS:										
		PROJECTOR/DISPLAY MOUNTS:										
		PROJECTOR/DISPLAY:										
		SPEAKER HARDWARE & BACKBOX:										
		CEILING MICROPHONES:										
WALL MOUNTED EQUIPMENT												
		ALL SPECIFIED BLOCKING:										
		FLAT PANEL MOUNTS:										
		FLAT PANEL DISPLAYS:										
		PROGRAM SPEAKERS:										
		CAMERAS:										
		PROJECTION SCREENS:										
ELECTRICAL (FOR AV USE)												
		ALL AV ELECTRICAL OUTLETS AND JUNCTION BOXES:										
		AV ELECTRICAL CONDUITS & PULL STRINGS:										
		FLOOR BOX AND ACCESSORIES:										
		AV LOW VOLTAGE CABLES:										
		ALL AV CONNECTORS:										
		ALL AV WALL PLATES:										
VOICE & DATA NETWORK (FOR AV USE)												
		ALL TELECOMMUNICATION PLATES:										
		IP/NETWORK CONFIGURATION FOR AV CONTROL:										
		IP/NETWORK CONFIGURATION FOR VIDEO CONFERENCEING:										
		VOP/SIP CONFIGURATION FOR AUDIO CONFERENCEING:										
		POTS/MANALOG TELEPHONE SERVICE & TERMINATION:										
		WIRELESS ACCESS POINT FOR AV:										
		ALL COAX RF PLATES/CABLE CONNECTIONS:										
LIGHTING DIMMING SYSTEMS												
		LIGHTING DIMMING EQUIPMENT:										
		LIGHTING DIMMING LVC FOR AV INTERFACE:										
		LIGHTING DIMMING LVC PROGRAMMED:										
MOTORIZED DRAPE/SHADES												
		DRAPE/SHADE MOTOR:										
		DRAPE/SHADE MOTOR LVC:										
PERMANENT FURNISHINGS												
		MILL/WORKTABLE PENETRATIONS & MODIFICATIONS:										
		CREDENTIAL VENTILATION:										
		EQUIPMENT RACKS FOR MILL/WORK:										
		AV EQUIPMENT RACKS:										

CABLE SCHEDULE			
WIRE#	SIGNAL TYPE	WIRE TYPE	WIRE MAKE/MODEL
PRETEXT			
A	LINE & MIC LEVEL ANALOG AUDIO	222 SH, 224 SH	
S	70V, 80 SPEAKER - MID LONG, XL LENGTH / LOW, MID-RANGE, HIGH OUTPUT	182, 182, 142, 122, 102	
V	BASE BAND DIGITAL VIDEO / ANALOG VIDEO	HDMI DP	
SDI	HD-SDI	RG59, RG6	
USB	USB-C / USB-A / USB-B, ETC.	USB	
N	NETWORK LAN, CONTROL, VOIP	CAT6	
UTP	UNSHIELDED TWISTED PAIR	UNSHIELDED CAT6	
STP	STP / ORESTRONOM EXTIRON XTP / EXTIRON DUT	SHIELDED CAT6	
F	MULTIMODE FIBER	MULTIMODE FIBER	
C	CONTROL, SERIAL, IR, RELAY, IO	222 SH, 224 SH, 226 SH	
CATV	750 COAX - CATV/SATELLITE	RG6U	
ANT	500 COAX - ANTENNA	RG6	
P	POWER - DC	182, 162	
IEC	POWER - AC		

WIRE LABEL CONVENTION	
THE WIRE ID NUMBER ADHERES TO THE FOLLOWING CONVENTION: 1 SERIES = INTERNAL TO AV EQUIPMENT RACK 1000 SERIES = EXTERNAL TO EQUIPMENT RACK SXXXX WHERE: S = INDICATES SIGNAL TYPE (REFER TO THE CABLE SCHEDULE). XXXX = UNIQUE INCREMENTAL NUMERIC VALUE.	

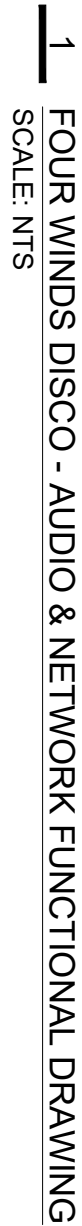


CONNECTORS	
	HDMI
	USB-A USB TYPE A
	DP DISPLAY PORT
	microB USB TYPE MICRO-B
	DVI DVI
	HD16 HD D-SUB
	F F-TYPE
	BNC BNC
	MINI DIN MINI DIN (X = Pins)
	DIN DIN (X = Pins)
	DB9 9 PIN D-SUB
	RJ45 SHIELDED/UNSHIELDED RJ45
	SFP SMALL FORM-FACTOR PLUG
	LC LC FIBER
	RJ11 RJ11
	PHX PHOENIX
	SCREW SCREW
	DC DC POWER
	IEC IEC POWER



GENERAL INFORMATION		REVISIONS:	
DRAFTER:	AVDL	ISSUED FOR REVIEW	
DESIGNER:	1	ISSUED FOR CONSTRUCTION	
PROJECT MGR:	1		
SALES REP:	1		
DATE:	11.21.2025		
SCALE:	AS INDICATED		

GENERAL NOTES, RESPONSIBILITY & JUNCTION BOX SCHEDULE, SYMBOLS AND LEGENDS	JOB NO:	---
SHEET		
AV-102		



AUDIO VISUAL ILLUMINATIONS INC.

GENERAL INFORMATION	
DRAFTER:	AVDL
DESIGNER:	-
PROJECT MGR:	-
SALES REP:	-
DATE:	11.21.2025
SCALE:	AS INDICATED

REVISIONS:		
DATE:	NO:	
11.21.25	0	ISSUED FOR REVIEW
11.24.25	1	ISSUED FOR CONSTRUCTION

